



SCORP
CRANE



PEAK IN

**POWER
ENGINEERING
PERFORMANCE**



EMBARKING A NEW JOURNEY AS APPROACHING 30 YEARS

Almost 30 years...

Long time to keep the routine,
but short one for pioneering.

A moment for those who are in
a hurry, a lifetime for those who
want to give meaning.

Making our company the strongest
and pioneering in crane machinery
was our mission for the last
30 years.

We added determination and passion
in every second; not because we had
to, because we wanted to.

Because we were doing what we
believed in.

Over a quarter century of added
experience, now we are embarking
to rewrite the rules and forge our
own path.

THE SCORP CRANE,
a Rasim Makina brand, was created;
to change the ordinary, to present
always more and to generate
sustainable solutions through
innovative designs.

Knowing that vision requires action
and performance is shaped by practice;
the desire for the better keeps on the
struggle with the current.

So, this will be its nature that will always
make the Scorp Crane better; this is its
form of expression and an attitude.

The main goal is to have the client
pronounce the same thing for it;
The Power of Functionality.

As today, the aspire for more and desire
of progress for the future will carry us
forward.

We have faith; This journey, in which
we are leading the world as well as in
Turkey, is going to be a symbol of the
change.

The way of introducing our knowledge
and experience is going to be
The SCORP CRANE.





STRONG BY NATURE

This is where the story begins for Scorp, the future innovative side of waste collection systems.

Produced in its 9,000 square meter facilities in accordance with the latest developments in the sector and the necessary design and quality requirements. Scorp products are subjected to field tests in anticipation of different working conditions and are presented to the end user upon passing all stages.

Strengthening sense of confidence, it provides in the sector and its customers with its legacy from its past, with the emphasis it puts on R&D investments, exports and total quality management, and the steps it has taken towards institutionalization, Scorp takes its steps very strongly in this new branding path.



SCORP CRANE WASTE COLLECTION SYSTEMS

Just as healthy nature has vital importance for our future, so healthy environment and cities, free of waste, are that important too. Therefore, relevant to systematically updated waste management systems; “whether higher capacity or lower capacity of aboveground and underground containers” the preference for garbage trucks mounted cranes for waste collection provide much more functional solutions in the city.

With its new generation recycling waste collection systems, Scorp offers solutions with different types of models and attachments in all containers needed.





POWER OF FUNCTIONALITY

Scorp, the new face of Waste Collection Systems invites you to discover the power of functionality for the best.

Scorp is at your side with its powerful, compact and tailored solutions.

Articulated, having wide mobility and extending telescopically when necessary, these load-lifting machines can be used with a remote control.

It has been produced with concept of being durable and maximizing benefit with minimum cost.

Scorp, whose most important features are compactness, lightness and strong structure, is also preferred with its additional features such as after-sales support, low spare parts cost and easy supply of all required attachments.

Get functionality and power everywhere with Scorp models produced in compliance with EN: 12999: A2 standards.

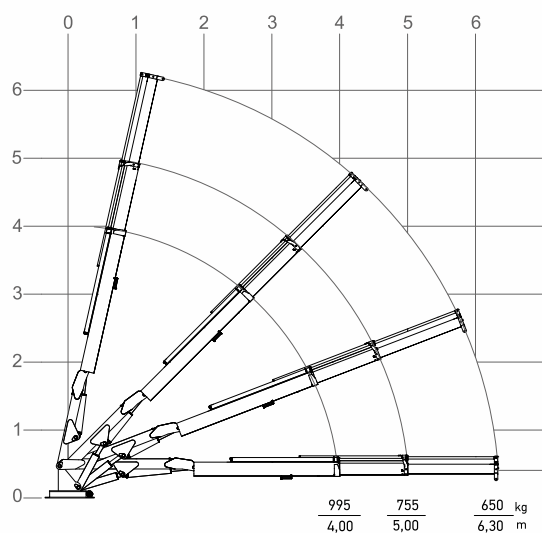
EVERYTHING IS SIMPLE WITH SCORP CRANE

Success comes with the desire

- Possibility of mounting on the garbage compactor,
- More compactor capacity with light and compact design
- Two different model options according to the vehicle to be mounted and its application area,
- Easy use of attachments suitable for the locking system for each container type,
- Electronic Moment Control System,
- Hydraulic control system that allows many movements at the same time,
- Radio remote control,
- Stability control system,
- Rotation arc limiter.

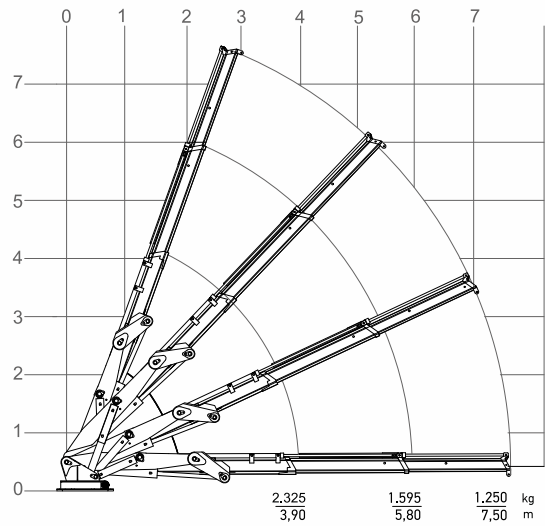
GC 40-600

| TECHNICAL FEATURES | VALUES |
|---------------------|------------|
| CAPACITY | 4,10 ton.m |
| OUTREACH | 6.300 mm |
| HYDRAULIC EXTENSION | 2.165 mm |
| WORKING AREA | 330° |
| ROTATION TORQUE | 15,60 kN.m |
| PRESSURE MAX. | 210 Bar |
| PUMP CAPACITY | 25 lt/min |
| DEAD WEIGHT | 560 kg |
| WIDTH | 670 mm |
| LENGTH | 4.435 mm |
| HEIGHT | 650 mm |



GC 100-750

| TECHNICAL FEATURES | VALUES |
|---------------------|------------|
| CAPACITY | 9,70 ton.m |
| OUTREACH | 7.500 mm |
| HYDRAULIC EXTENSION | 3.600 mm |
| WORKING AREA | 330° |
| ROTATION TORQUE | 42,80 kN.m |
| PRESSURE MAX. | 180 Bar |
| PUMP CAPACITY | 36 lt/min |
| DEAD WEIGHT | 1.350 kg |
| WIDTH | 920 mm |
| LENGTH | 4.400 mm |
| HEIGHT | 700 mm |



SCORP CRANE

WASTE COLLECTION SYSTEMS



ARCHI - MUSHROOM CONTAINER DISCHARGE UNIT

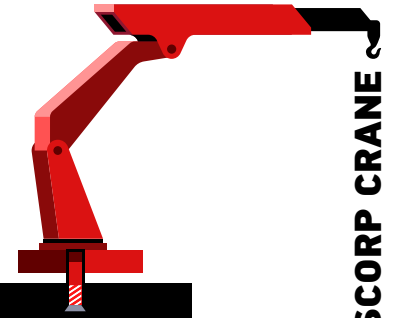
The ARCHI attachment is a product of Rasim Makina, designed for the optimum solution to collect the mushroom containers in easy, fast and effective way.

The Scorp Crane is used with the ARCHI attachment for the push-down mushroom discharge system, the dynamic mushroom's top pinion has to be pushed down to keep the bottom trap door locked during the lifting process.

The bottom trap doors open with gravity, when the mushroom's dynamic part is released, trap doors open automatically. Sensitive positioning and activation of the attachment are provided by the rotator and the hydraulic connections on the rotator.

Extra two hydraulic control sections and the hydraulic system should be ready on the crane to use with the ARCHI attachment.





SCORP CRANE

WASTE COLECTION SYSTEMS

KINSHOFER - MUSHROOM CONTAINER DISCHARGE UNIT

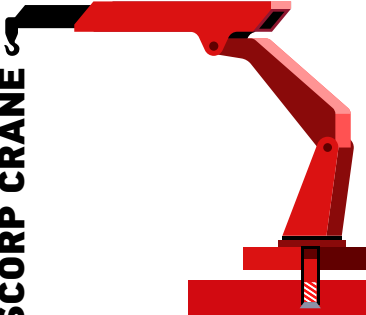
The Scorp Crane is used with the KINSHOFER a container discharge attachment which is suitable for the pick-up mushroom system. Containers can be unloaded by a single-person with minimum effort through the pick-up mushroom trap door type.

The top of the movable mushroom system must also be lifted for the trap doors to remain locked during the lifting process. The trap doors are operated by chains or a traverse leverage system connected to the movable mushroom. When this top is lowered the trap doors open automatically.

Precise positioning with rotator, due to the use of a rotator.

Extra two hydraulic control sections and the hydraulic system should be ready on the crane to use with the KINSHOFER attachment.





WASTE COLECTION SYSTEMS

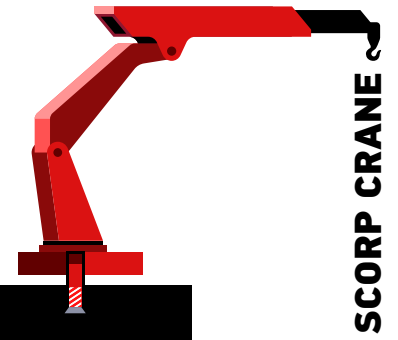
SINGLE HOOK CONTAINER DISCHARGE UNIT

Cranes are used with a single lifting hook for handling of street containers.

This model is especially preferred by the users who have their operations in narrow streets, could also be used in crowded cities due to it's fast, safe and practical nature.

The system is being built on functionality. Container does not have a special trap door locking system.





WASTE COLECTION SYSTEMS

DOUBLE HOOK CONTAINER DISCHARGE UNIT

The Scorp Cranes are used with a double hook system for handling and pick-up hook for opening of trap doors of containers.

Containers with 2 hooks arrangement are lifted using a crane traverse. The movable hook must also positioned upright during the lifting process. The trap doors are operated by chains or a traverse leverage system connected to the movable hook. When this hook is lowered the trap doors open automatically. The movable hook is installed in extension boom of crane by a traverse and pulling ram.

The extra hydraulic control section and the hydraulic system should be ready for the second hook system on the crane.





SCORP
CRANE

RASIM
makina - vinci

www.rasimmakina.com